



Adult Education Board Presentation

February 28th, 2024



#SEETHEIMPACT

Our Mission

Break the poverty cycle through education. In Harris County, one in three adults struggles with low functional literacy. HCDE Adult Education offers free programs to enhance literacy and workforce skills, empowering participants to thrive as adults. Accessible education is key to preventing individuals and families from becoming statistics.

#SEETHEIMPACT



Harris County
Department of
Education

The Management Team

Eduardo Honold
Senior Director

Linda Fehoko
Director

Angelica De Leon
Program Manager

Bill Medina
Program Manager

Brigett Bentley
Budget and Compliance
Coordinator

Sanjuanita Montes
Secretary



#SEETHEIMPACT



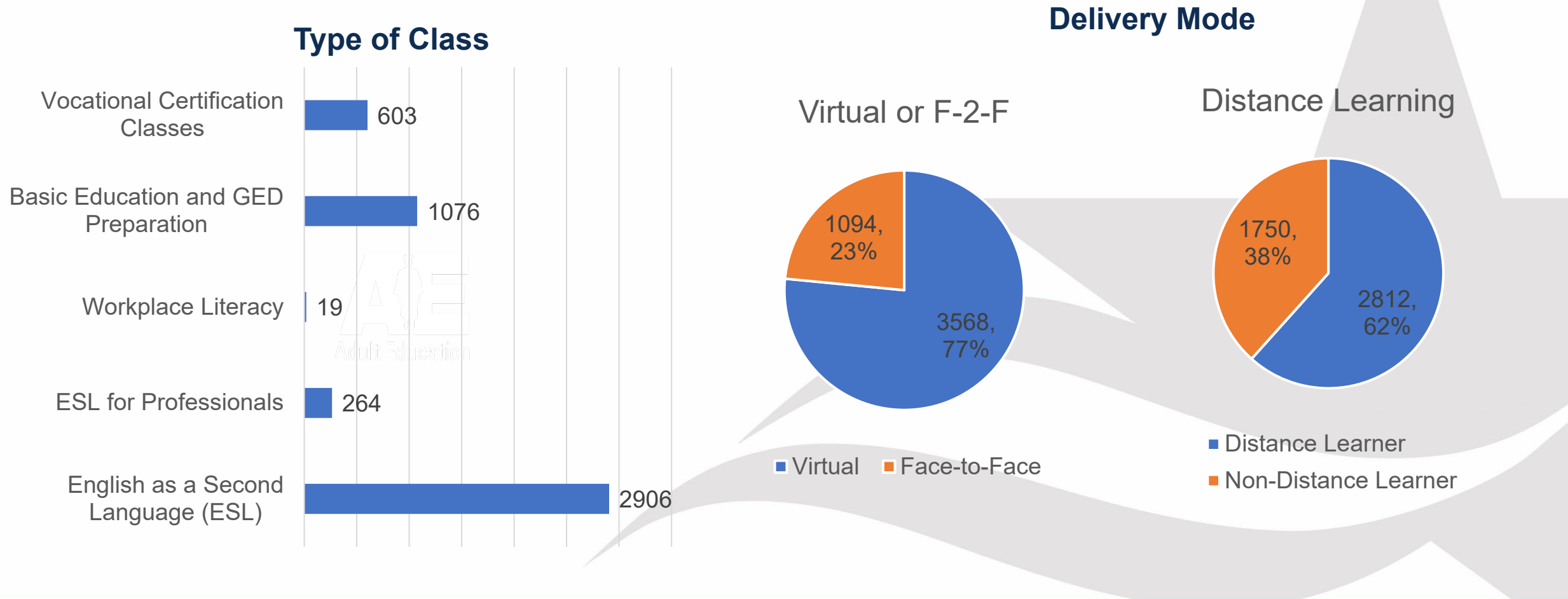
Harris County
Department of
Education

162 Staff and Teachers

- 1 Coordinator
- 5 Data entry clerks
- 1 Receptionist
- 10 General Office Clerks
- 109 Teachers
- 13 Program Assistants
- 3 Custodians
- 8 Aides

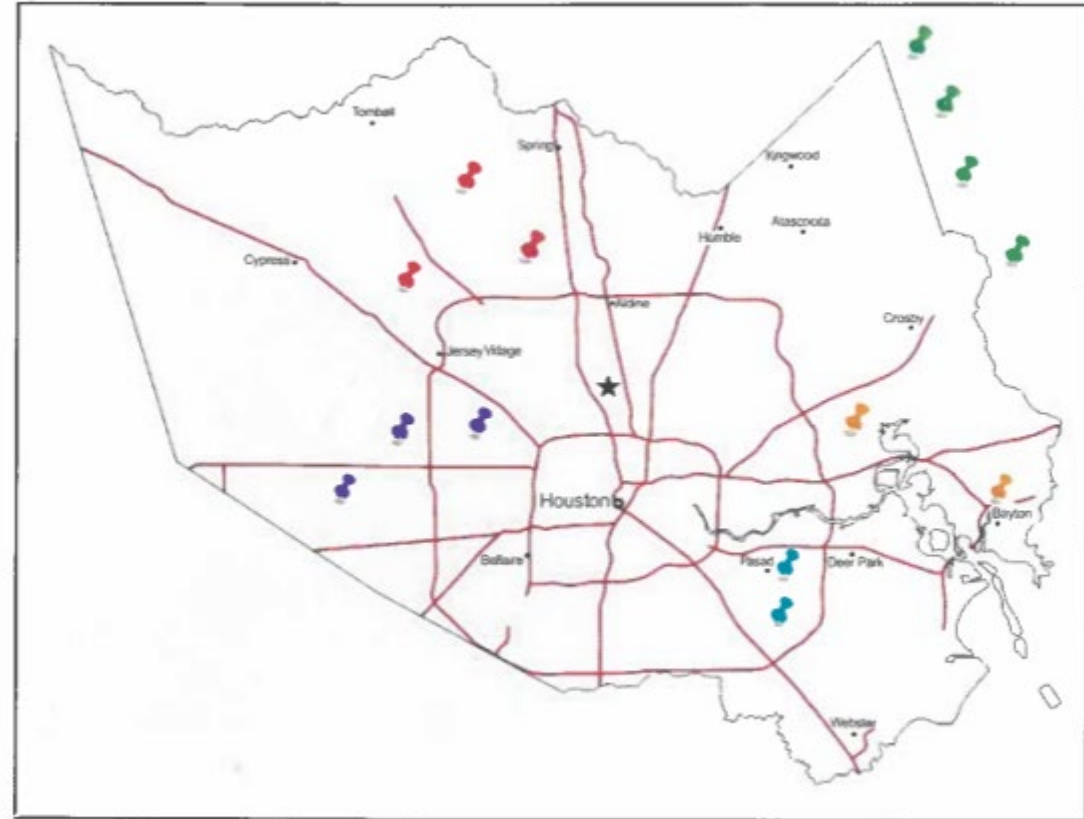


Our Services PY 22-23



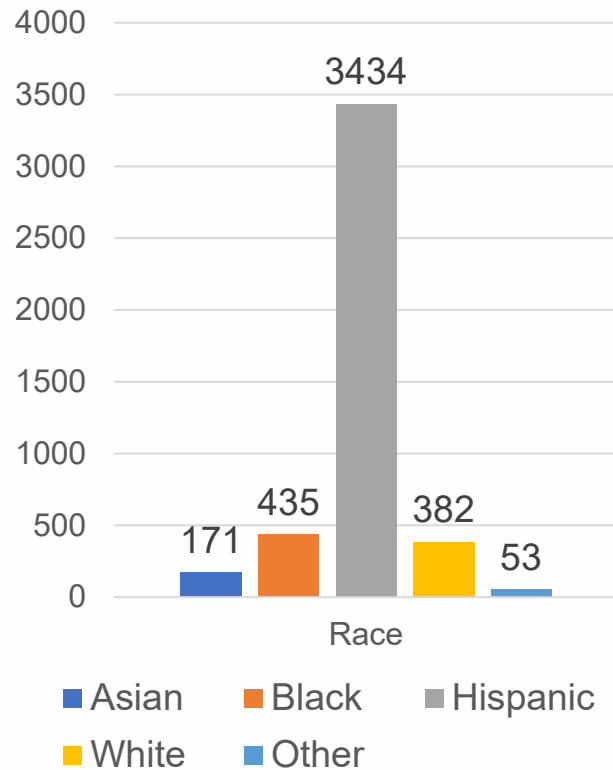
Our Service Area

CENTRAL
Adult Education Learning Center
EAST
Baytown Adult L.C. Cleveland M.S. Covenant w/ Christ (Cleveland) Kruse Elementary (Pasadena) Lomax Middle School (Pasadena) Royalwood Middle Santa Fe M.S. (Cleveland)
NORTH
Foundry Methodist Church Klein Forest High School Northwest Assistance Ministries
VIRTUAL
Virtual ESL Virtual HSE
WEST
Alief Talent and Development Center Mayde Creek High School Spring Branch Family Development Center

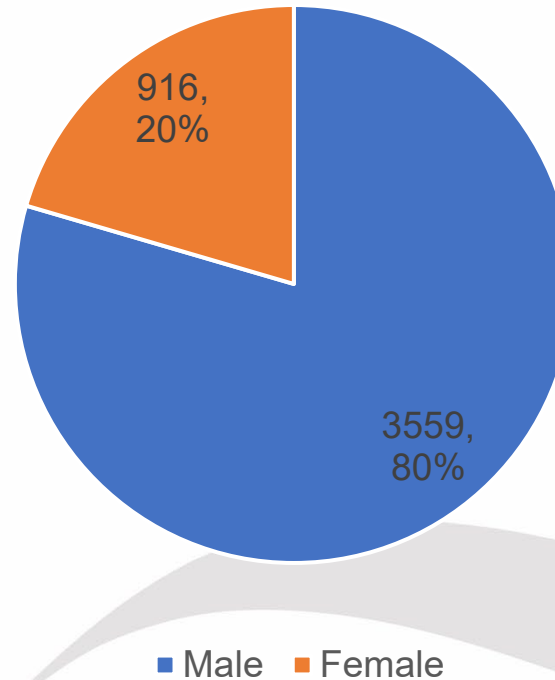


Our Students

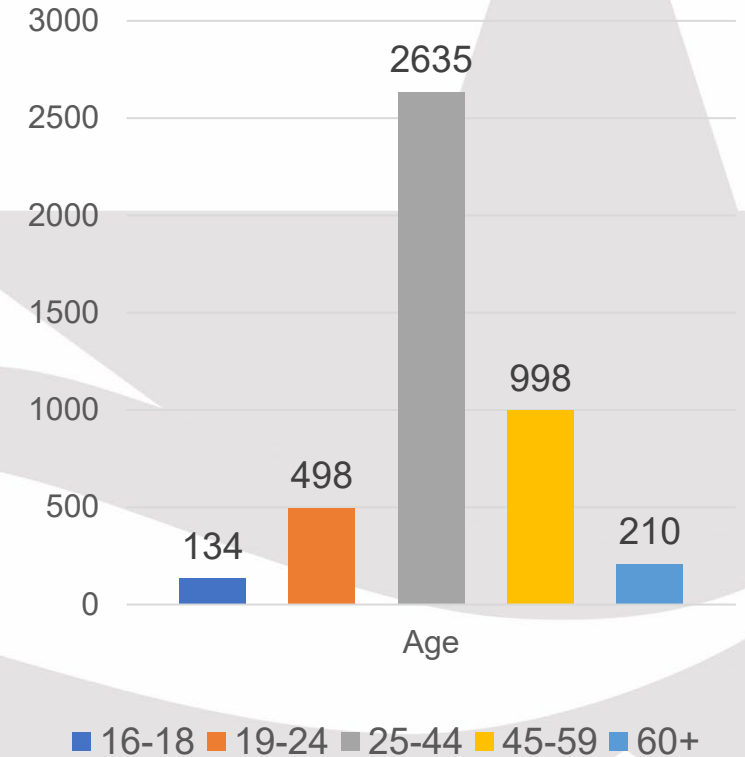
Race/Ethnicity



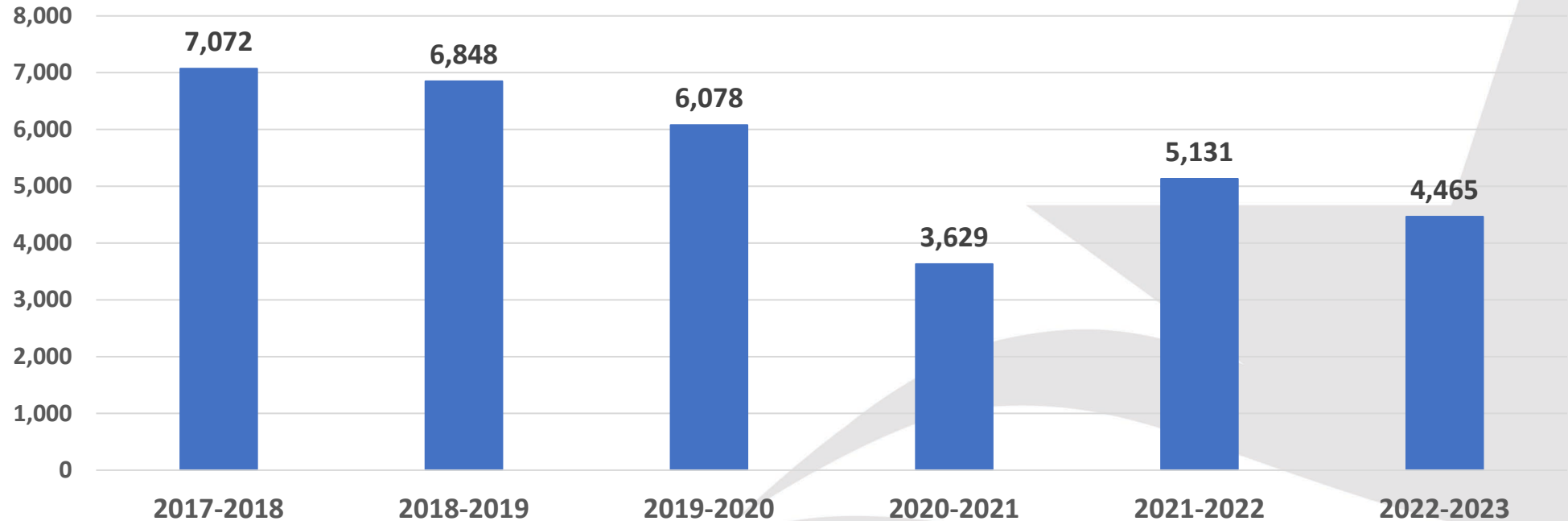
Gender



Age



Adult Education Enrollment Trends



Enrollment in the HGAC AEL Consortium

PY 22-23				
Total Enrollment				
Program	12+Participants	% Total HGAC Enrollment	% HGAC Budget	% HGAC Enrollment minus % HGAC Budget
HCDE	4,037	25%	25%	0%
Houston CC	3,042	19%	24%	-5%
Lone Star C	2,177	14%	8%	5%
All other HGAC	11,886	75%	75%	0%
ALL HGAC (duplicated)	15,923	100%	100%	



Student Performance: Measurable Skills Gains

PY 22-23 Measurable Skills Gains				
Program	Participants	MSGs	% MSG	% of MSG State Target (44.43%)
HCDE	4,037	1,652	40.92%	90.08%
Houston CC	3,042	981	32.25%	72.58%
Lone Star C	2,177	700	32.15%	72.37%
All other HGAC	11,886	4,669	39.28%	88.41%



Workforce Certification Training

PY 22-23 Programs Offered

- Certified Nursing Assistant
- Customer Service Marketing Representative
- Medical Assistant Prep
- Heating Ventilation and Air Conditioning
- Business Office Technology
- Phlebotomy
- Medical Billing and Coding
- Front Office Specialist

	# IET Participants	# Workforce Certifications	%
PY 2022-2023	595	347	58.30%



High School Equivalency (HSE/GED)

Program Year	ABE/HSE Students	# HSEs	% Attainment
2018-2019	2,229	163	7.3%
2019-2020	1,701	83	4.9%
2020-2021	1,018	63	6.2%
2021-2022	1,220	113	9.3%
2022-2023	1,017	119	11.7%



A group of approximately 15-20 people, mostly in business attire, are gathered in a modern office building for a ribbon-cutting ceremony. They are standing behind a red ribbon that is stretched across the frame. Two men in the center are using large scissors to cut the ribbon. The background shows large glass windows and blue walls. The text "Challenges and Opportunities" is overlaid in white, bold font across the middle of the image.

Challenges and Opportunities

The New Adult Education Learning Center

- Since September 2023, the Adult Education Learning Center has hosted 66 classes serving a total of 898 students.
- By the end of the year, the Learning Center will serve about 1,500 students.
- The Learning Center is pivotal in increasing enrollment by 20% and from shifting from 75% virtual classes to 60% in-person classes in PY 23-24.
- The New Adult Learning Center has hosted 60 educational and community activities including conferences and meetings.



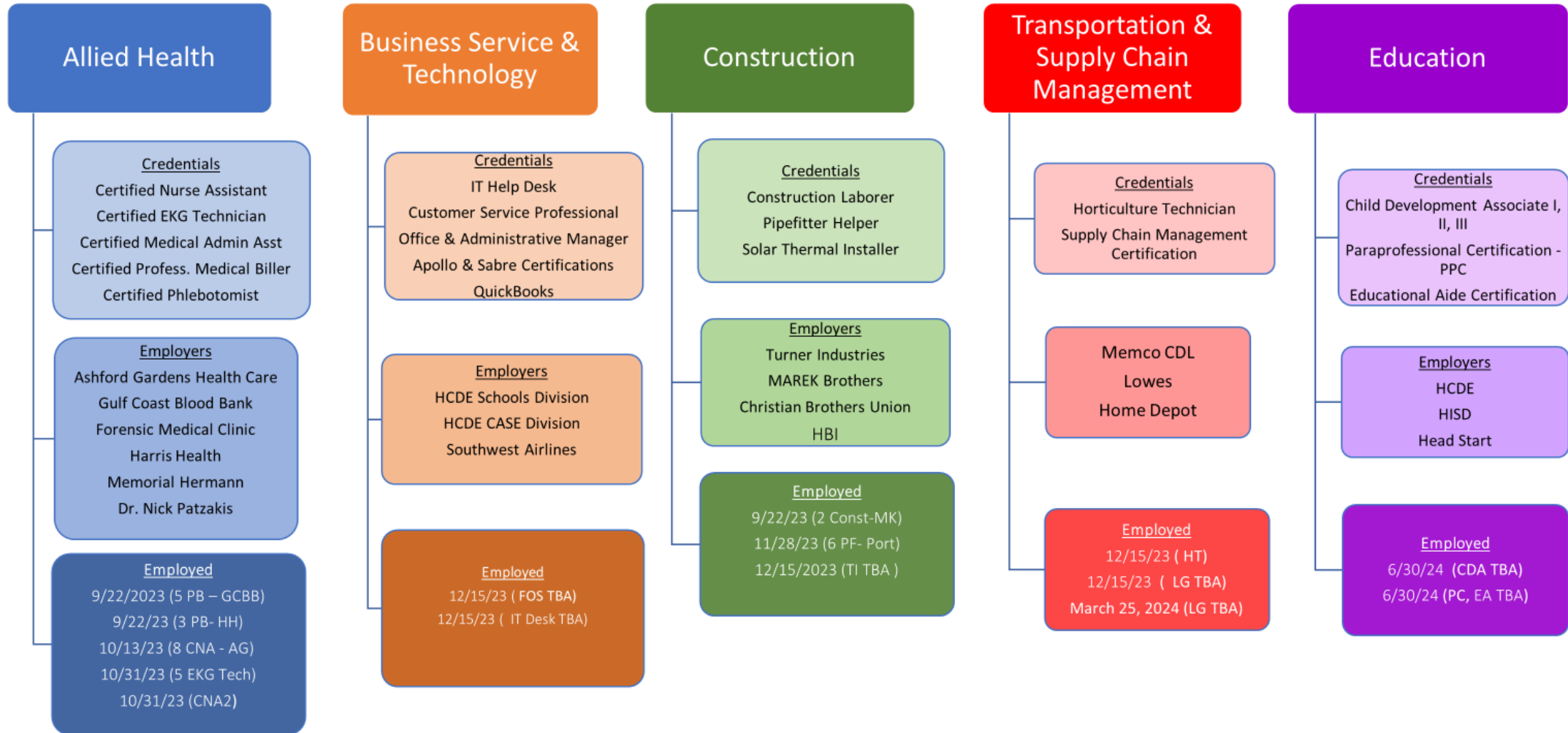
#SEETHEIMPACT

Strong Career Pathways

- Increase variety and quality of Vocational Certification Training programs
- Expand collaboration with employers
- Provide better student support for jobs and post-secondary attendance



AE Career Pathways 2023-2024



Defining Our Path to Success

- HCDE has submitted a strong application for funding for the next five years from the Texas Workforce Commission.
- These funds will allow HCDE to implement its vision of excellence beginning July 1, 2024

